

# RECONNECT JACKSON WARD FEASIBILITY STUDY

# WELCOME

## COMMUNITY VISIONING

**We're glad you're here!**  
**Walk around the room. Here's**  
**what you'll get to do.**

Learn about Jackson Ward and  
the Feasibility Study to  
reconnect the neighborhood.

Explore what "reconnect"  
means to you.

Share your thoughts on design features,  
points of interest and locations for  
reconnecting Jackson Ward and  
surrounding neighborhoods.

### COVID GUIDELINES

All guests must be fully vaccinated in  
accordance with the CDC guidelines.  
Proof must be provided prior to entering  
the facility.

Any guests not fully vaccinated must  
provide proof of a negative COVID 19 test  
administered within 24 hours of  
the attending event.

All guests must wear a mask  
throughout the event unless  
they are eating or drinking.



**WELCOME  
TO THE EVENT**

**WHAT ARE WE  
RECONNECTING?**

**PROJECT  
OVERVIEW**

**LOCATION  
PRIORITIZATION**

**HISTORY OF  
JACKSON WARD**

**RECONNECT  
JACKSON WARD  
CONSIDERATIONS**

**CASE STUDIES  
& OTHER PROJECTS**

**NEXT STEPS**

# COMMUNITY VISIONING WELCOME



## ABOUT THE STUDY

Evaluate reconnecting Jackson Ward, Gilpin Court, and surrounding neighborhoods separated by Interstate 95/64 since the 1950s.



## STUDY GOALS

Collect community feedback on ideas to reconnect Jackson Ward.

Plan community outreach activities.

Position the City of Richmond to receive future funding.

## 2022 STUDY SCHEDULE



STUDY AREA & LOCATION

RECONNECT JACKSON WARD



RECONNECT JACKSON WARD FEASIBILITY STUDY

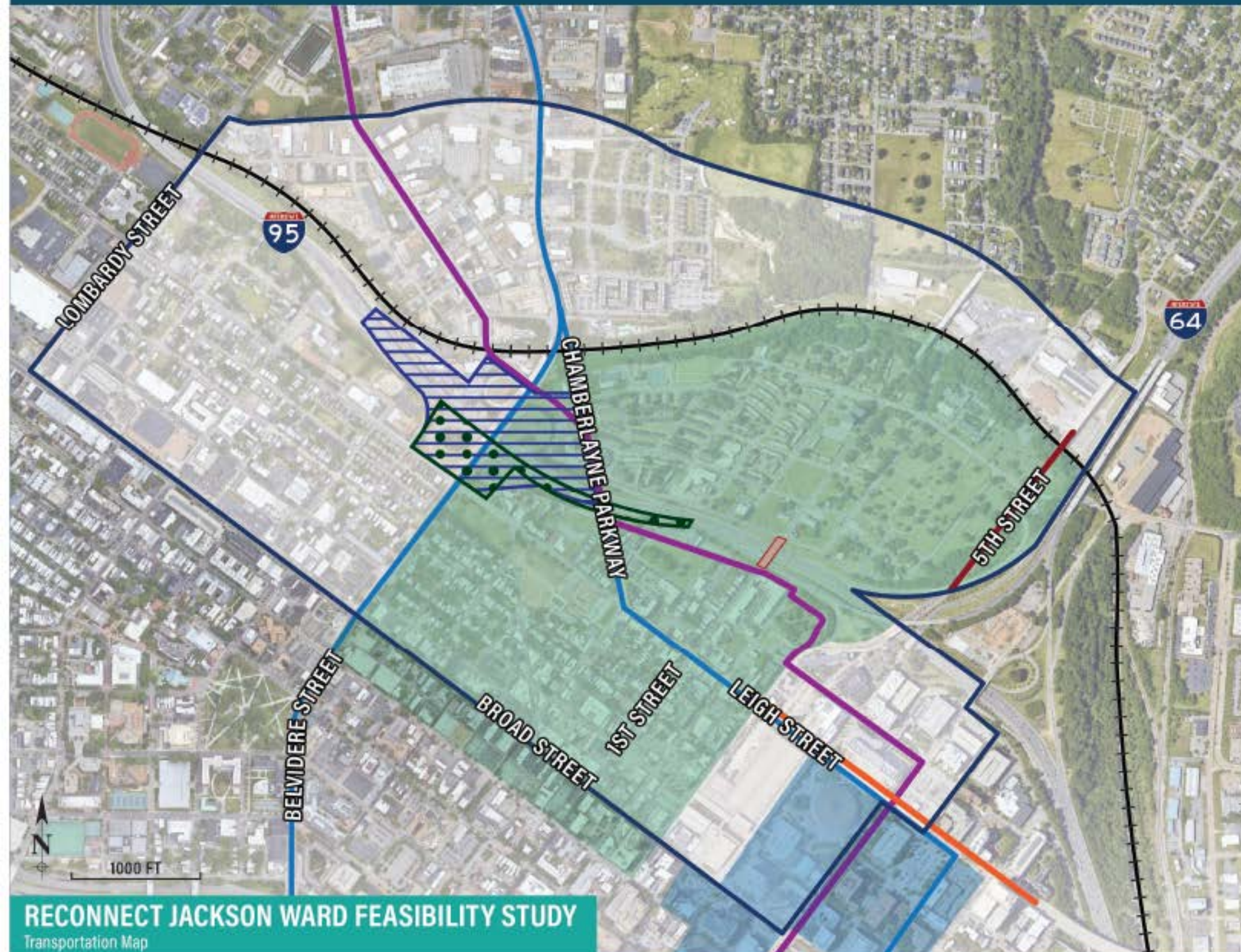
Study Area and Project Location

1000 FT

# OTHER LOCAL TRANSPORTATION PROJECTS

## LEGEND

- 
**FALL LINE TRAIL (VDOT)**
  - 43-mile north-south from Ashland to Petersburg through Richmond
  - Providing active transportation, recreation, and economic development
- 
**RICHMOND - I-95 BELVIDERE STREET INTERCHANGE IMPROVEMENTS (VDOT)**
  - Improving access from Belvidere Street to I-95 south/I-64 east
  - Crosswalk improvements for pedestrian safety and accessibility
- 
**HUD CHOICE NEIGHBORHOODS PLANNING GRANTS (RRHA & CITY OF RICHMOND)**
  - \$450,000 grant for a planning process to redevelop Gilpin Court
- 
**DC2RVA S-LINE**
  - Increase intercity passenger rail capacity and improve travel times as part of the Washington, DC to Richmond segment of the Southeast High Speed Rail project
- 
**1ST STREET BRIDGE REHAB**
  - Replace the bridge superstructures (e.g. steel beams and parapets) and rehabilitate the substructures (e.g. abutments and piers) to extend the life cycle of the bridges
  - Raise the vertical clearance under the bridges to reduce bridge strikes
- 
**CITY CENTER REDEVELOPMENT**
  - Rezone and redevelop the City Center to align with the City's Innovation vision
- 
**NORTH-SOUTH BUS RAPID TRANSIT (GRTC)**
  - Alignment study for BRT expansion (Not yet announced)
- 
**5TH STREET BICYCLE LANES**
  - Planned separated bicycle lanes extending north and south of Hospital Street
- 
**LEIGH STREET STREETScape IMPROVEMENTS**
  - Planned streetscape redesign from 3rd Street to the Martin Luther King Jr Memorial Bridge



RECONNECT JACKSON WARD FEASIBILITY STUDY

Transportation Map

# A LOT IS HAPPENING AROUND HERE!

**DID YOU KNOW?**

Jackson Ward has a notable history. Let's play trivia. Can you guess the answers?



1. Gilpin Court is named for Charles Sydney Gilpin. Who was he?  
A. Actor  
B. Banker  
C. Author

2. What year were Jackson Ward and surrounding neighborhoods divided by the highway?  
A. 1964  
B. 1972  
C. 1958



3. St. James, St. Paul, St. John, and St. Peter are street names in N. Jackson Ward. Over the years, this area was called by 2 names. What name was it NOT called?  
A. Postletown  
B. Little Africa  
C. Gilpinton

5. What famous American singer, tap dancer and actor was born in Jackson Ward?  
A: Nat King Cole  
B: Bill "Bojangles" Robinson  
C: Otis Redding



A

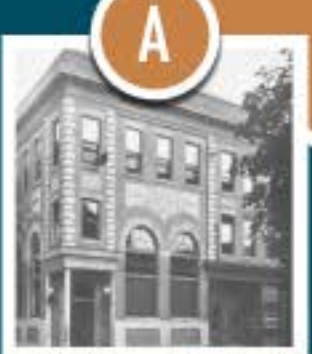


B



C

4. Name two (2) of the three (3) businesses established by Maggie Lena Walker in Jackson Ward.  
A: St. Luke Penny Savings Bank  
B: The Baker Public School  
C: St. Luke Emporium



St. Luke Penny Savings Bank  
900 St. James Street



The Baker Public School  
100 West Baker Street



St. Luke Emporium  
900 St. James Street

# JACKSON WARD

Post-Reconstruction Era, "Jackson Ward" was created as a political boundary meant to neutralize the new voting power of the recently emancipated Blacks. Jackson Ward was known as "Black Wall Street" and "Harlem of the South" due to the thriving Black businesses and entertainment venues located throughout Jackson Ward. During its heyday from the 1920s through the 1940s, Jackson Ward was one of the most active and well-known centers of African-American life throughout the U.S., and the hub of black professional and entrepreneurial activities in the city and the state.

## Impacts of Housing & Highway Projects

Urban renewal or "slum clearance" & highway projects, largely funded by state & federal programs, altered the socio-spatial landscape of many U.S. cities throughout the 20<sup>th</sup> Century. Richmond, Virginia utilized this funding and eminent domain in many of the older areas of the city at the expense of the mostly black communities living there. Overlaying outlines of the block configurations from 1924 Sanborn Insurance Maps over today's infrastructure shows how much the urban landscape was changed (as shown in the map to the right).

### 1 Public Housing: Gilpin Court

- Built in 1942, expanded in 1957 and 1970
- Funded by United States Housing Act of 1937
- First public housing site in Richmond
- First instance of slum clearance in Richmond
- Altered street network
- Only 25 of the original residents of this area qualified to live here
- Displaced 100s of black residents of Apostle Town neighborhood

### 2 Highway Construction: Interstate 95/64

- Construction 1955 - 1958
- Funded by Commonwealth of Virginia
- Displaced 10% of city's black population at the time
- Physically split once-thriving black neighborhood Jackson Ward
- Destroyed dozens of mixed-use streets and completely disrupted street network



1924



1952



2021

# OVERVIEW OF NEIGHBORHOOD AND HISTORY



**1871**

Jackson Ward created as an official political subdivision in the City (ward); becomes 'city within a city' referred to as the 'Black Wall Street' and the 'Harlem of the South'.



**1903** | Maggie Walker opens the St. Luke Penny Savings Bank.

**1914** | Hippodrome opens as vaudeville and movie theater.

**1930s** | Jackson Ward is home to 8,000 African-Americans.

**1930 - 1940** | The Hippodrome Theater evolves into a music venue attracting Ella Fitzgerald, Louis Armstrong, Bill "Bojangles" Robinson, Duke Ellington and others.

**1941** | Richmond Redevelopment Housing Authority begins construction of Gilpin Court, the city's first public housing community. Gilpin Court opens housing to tenants in 1943 demolishing Apostle Town.



**1958**

Richmond-Petersburg Turnpike opens July (redesignated to I-95); divides the Jackson Ward northern and southern sections into two separate communities. The construction displaced thousands of residents and destroyed hundreds homes and businesses.

**1967** | The Hippodrome Theater closes. Despite attempts at re-opening, it remains mostly shuttered.

**1976-1978** | South Jackson Ward listed on the National Register of Historic Places; designated National Historic Landmark. At the same time, urban renewal demolishes approx. 150 homes in Jackson Ward, further dividing the community.

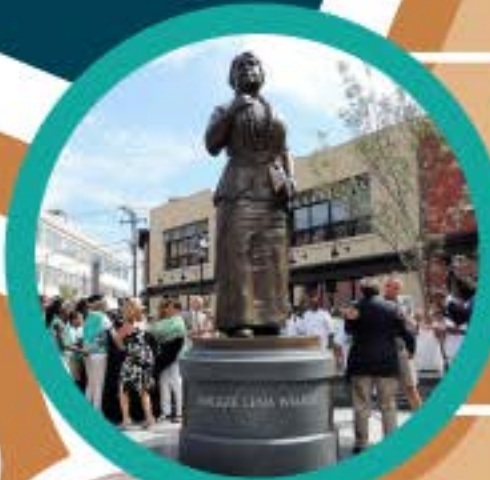
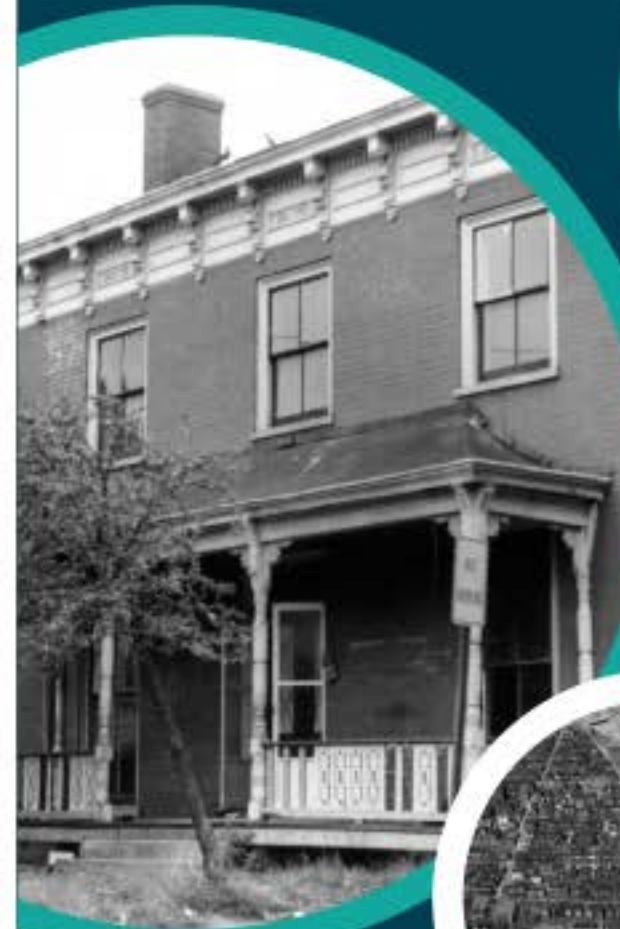
**1991** | The Black History Museum & Cultural Center of Virginia opens at 00 Clay Street in Jackson Ward.

**2017** | Maggie Lena Walker monument unveils at Adams and Broad Streets.

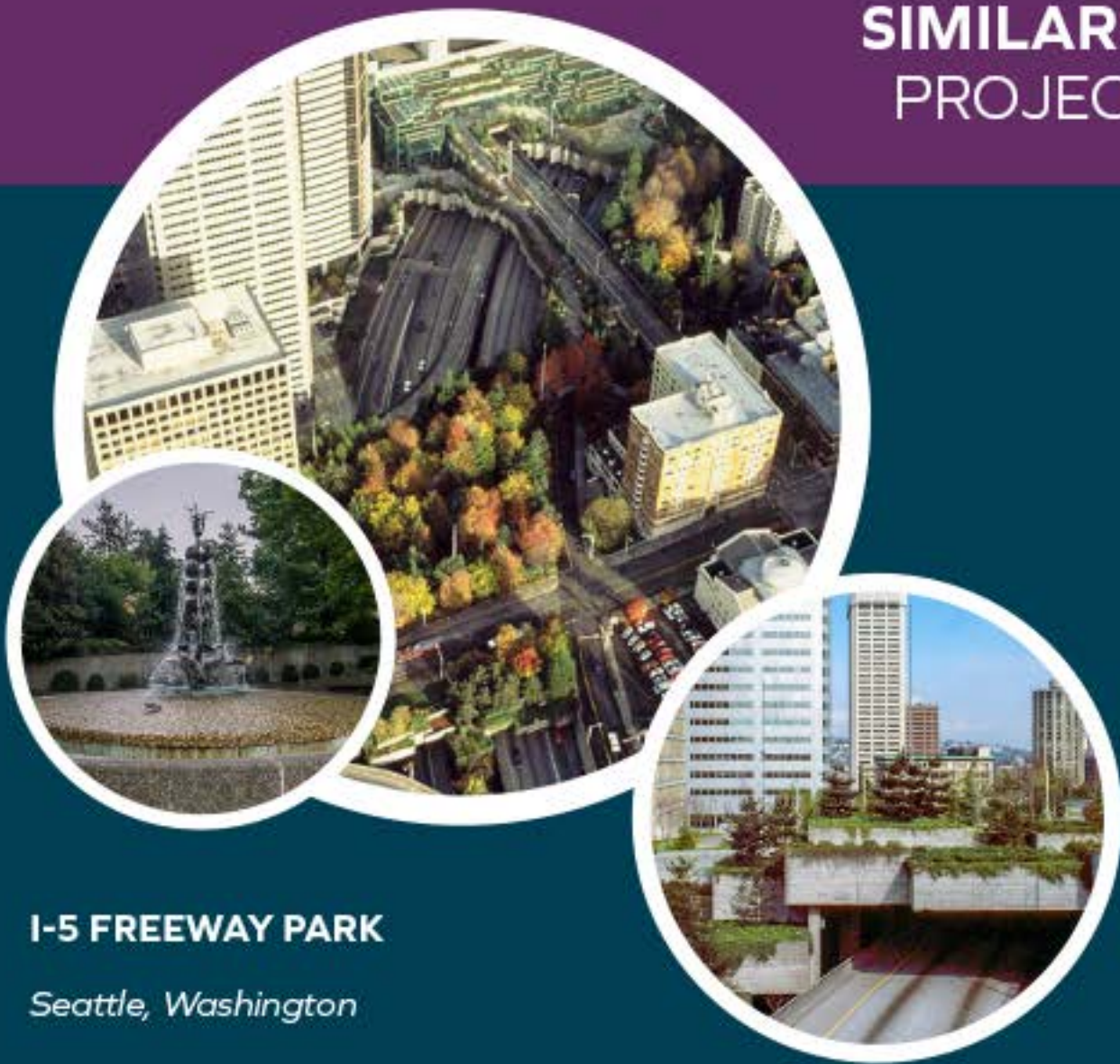
**2020** | The JXN Project forms to elevate and celebrate the long, rich legacy of Jackson Ward.

**2020**

Richmond 300 Master Plan adopted as a guide for growth to 2037; includes vision for Reconnecting Jackson Ward.



## SIMILAR "RECONNECT" PROJECTS IN THE U.S.



### I-5 FREEWAY PARK

*Seattle, Washington*

YEAR COMPLETED: 1976

APPROX. COST: \$24M (1976 CY)

APPROX. SIZE: 5 AC (220,000 SF)

#### RECONNECTS

Downtown Seattle

#### FEATURES

- Sidewalks or paths for people who walk
- Parks and open space (irregular, linked plazas)
- Historic markers, murals, or memorials
- Seating and benches
- Arts, culture and entertainment space
- Other (Fountains)



### SR 366 KLYDE WARREN PARK

*Dallas, Texas*

YEAR COMPLETED: 2012

APPROX. COST: \$110M (2021 CY)

APPROX. SIZE: 5 AC (220,000 SF)

#### RECONNECTS

Uptown neighborhoods with downtown arts / business district

#### FEATURES

- Sidewalks or paths for people who walk
- Parks and open space
- Business / commerce space (restaurants and food trucks)
- Historic markers, murals, or memorials
- Seating and benches
- Playgrounds and recreational facilities
- Arts, culture and entertainment space
- Other (Fountains, Dog Park)



# SIMILAR "RECONNECT" PROJECTS IN THE U.S.



## I-670, THE CAP AT UNION STATION

*Columbus, Ohio*

YEAR COMPLETED: **2004**  
APPROX. COST: **\$ 10M (2004 CY)**  
APPROX. SIZE: **1 AC (44,000 SF)**

### RECONNECTS

Downtown Columbus to its arts / entertainment district

### FEATURES

- Sidewalks or paths for people who walk
- Business / commerce space (restaurants and shops)



## I-195, KANAWHA PLAZA

*Richmond, Virginia*

YEAR COMPLETED: **1980**  
APPROX. COST: **N/A**  
APPROX. SIZE: **3 AC (130,000 SF)**

### RECONNECTS

Downtown Richmond with areas near the James River

### FEATURES

- Sidewalks or paths for people who walk
- Parks and open space
- Seating and benches
- Arts, culture and entertainment space
- Other (Fountain)



# WHEN YOU THINK ABOUT **RECONNECTING JACKSON WARD,** WHAT IS **MOST IMPORTANT** TO YOU?

SHARE YOUR IDEAS  
ON WHAT  
RECONNECTING  
MEANS TO YOU

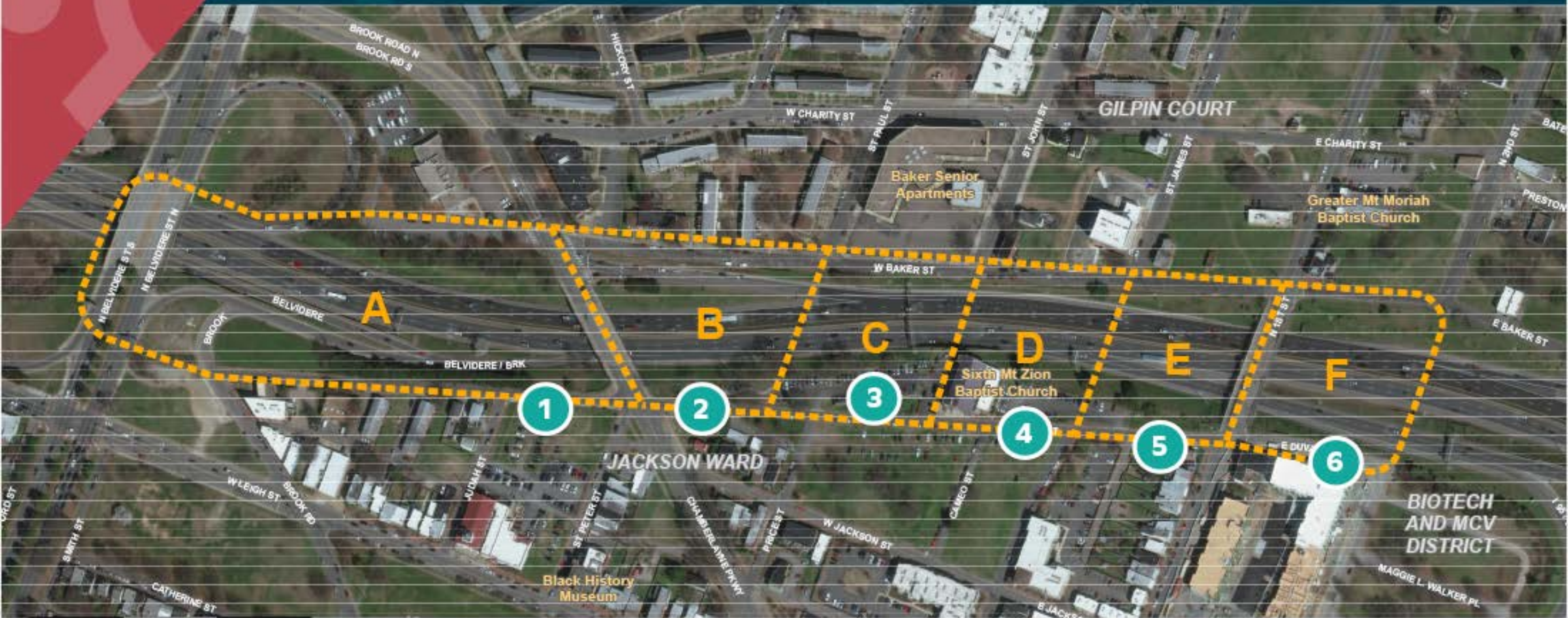
SOME EXAMPLES  
MIGHT INCLUDE:

- HEALING PAST WRONGS
- CONNECTING HISTORY  
TO THE PRESENT
- BRING ECONOMIC OPPORTUNITY
- BETTER SIDEWALKS

- PLAYGROUNDS & PARKS
- CONNECTING PEOPLE
- CONNECTING PLACES  
(ENTERTAINMENT, ARTS & FOOD)

# WHERE ARE WE RECONNECTING?

Place a sticker on the board or the corresponding map where you would most prefer to see a future connection considered. Please leave a note to tell us why you picked the location(s) for a future connection.



**1** A - N. BELVIDERE STREET TO CHAMBERLAYNE PARKWAY



**2** B - CHAMBERLAYNE PARKWAY/ST PETER STREET TO ST. PAUL STREET



**3** C - ST. PAUL STREET TO ST. JOHN STREET



**4** D - ST. JOHN STREET TO ST. JAMES STREET



**5** E - ST. JAMES STREET TO N. 1ST STREET



**6** F - N. 1ST STREET TO N. 2ND STREET

# CONSIDERATIONS

Help us determine what features are important for a future connection over the highway.

Place a sticker on the board or the corresponding design features you would like to see.



**SIDEWALK OR  
PATH FOR PEOPLE  
WHO WALK**



**BIKE LANES OR  
PATHS FOR PEOPLE  
WHO RIDE BIKES**



**ROADWAYS FOR  
CARS, TRUCKS,  
AND BUSES**



**PARKS AND  
OPEN SPACE**



**BUSINESS/  
COMMERCE SPACE**



**PUBLIC HISTORIC MARKERS,  
MURALS, OR MEMORIALS**



**SEATING  
AND BENCHES**



**PLAYGROUNDS  
AND RECREATIONAL  
FACILITIES**



**ARTS, CULTURE  
AND ENTERTAINMENT  
SPACE**

**DO YOU HAVE  
OTHER IDEAS?**

Please share them here.



**THANK YOU  
FOR PARTICIPATING**

**RECONNECT  
JACKSON WARD**

# NEXT STEPS

## TAKE THE SURVEY - PROVIDE YOUR FEEDBACK

**SURVEY CLOSES MARCH 31, 2022**

Comment forms available at meeting.

## ATTEND COMMUNITY EVENTS

March - Pop-Up Events

April - Public Event to Present Preliminary Designs

June - Final Designs Unveiled

Event dates and times will be posted on the project website: [reconnectjacksonward.com](http://reconnectjacksonward.com)

## SIGN UP FOR EMAILS

To stay up to date with the progression of the Reconnect Jackson Ward Feasibility Study

