



RECONNECT
JACKSON WARD
FEASIBILITY STUDY

STEERING COMMITTEE
Virtual Meeting #5

June 23, 2022
4:00 – 5:30 PM

MEETING ORIENTATION

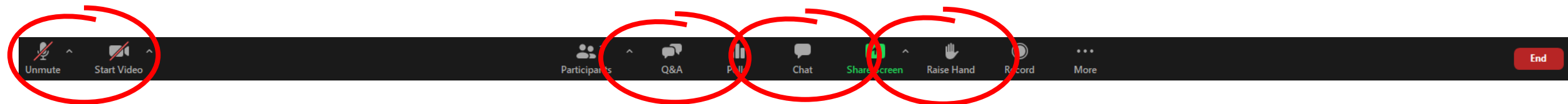
- Virtual meeting open to all interested in attending

Steering Committee and Study Team (Panelists)

- Encouraged to speak during questions and answers
- Invited to provide input through chat
- Asked to turn off webcam and mute mic unless actively participating in meeting

Additional Attendees (**Attendees**)

- Invited to provide input through Q&A
- Requested to raise hand to speak
- Asked to mute mic unless called upon to speak



AGENDA

1. Introductions
2. Overview of Study Process
3. Questions and Answers
4. Review of Design Framework Plan
5. Questions and Answers
6. Recommendations and Next Steps
7. Questions and Answers
8. Adjourn

1. INTRODUCTIONS – STUDY TEAM

PROJECT PARTNERS



Maritza Pechin
Deputy Director

Dironna Clarke
Administrator

Yessenia Revilla
Planner



Ronique Day
Deputy Director



Ben Mannell
Assistant Division Administrator

CONSULTANT TEAM



Caleb Parks
Project Manager



Ebony Walden
Principal



Shawn Balon
Executive Director



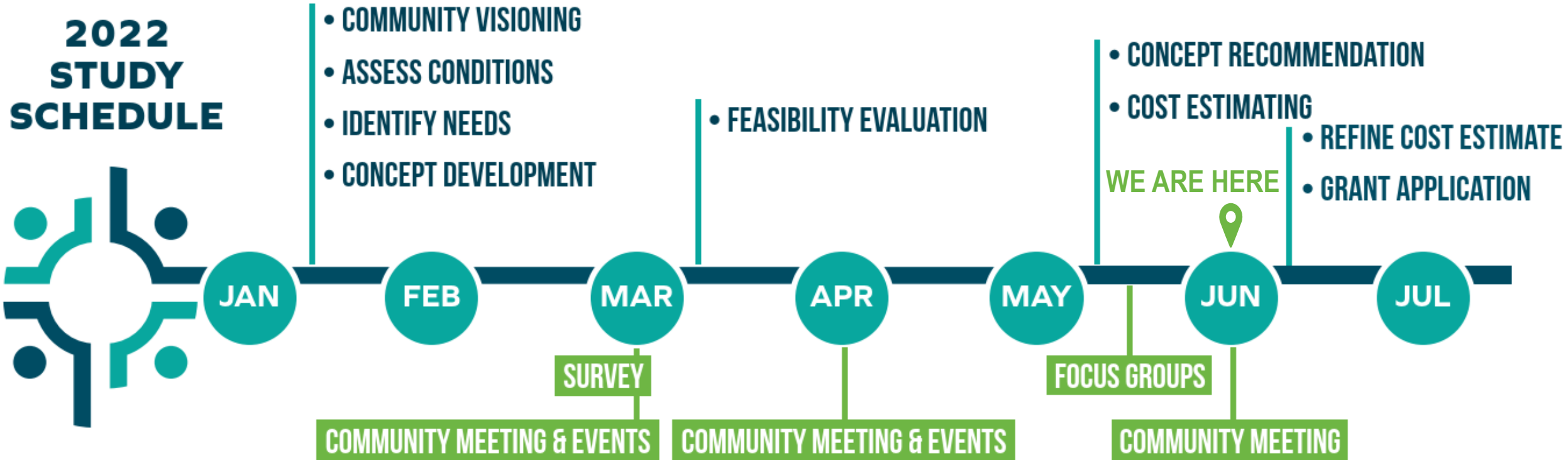
Tristan Cleveland
Project Manager



Mike Carosi
President

1. STEERING COMMITTEE – ROLL CALL

2. FEASIBILITY STUDY PROCESS



2. VISION STATEMENT

1. At the heart of Reconnect Jackson Ward are the ideals of inclusion, unification, and access for everyone, while **“keeping black history alive.”**
2. A place that elevates the community and the City of Richmond. Jackson Ward will be reconnected with community amenities, green spaces, paths, programmable spaces, and new development sites that **“fade the freeway from the foreground to the background.”**
3. A welcoming place of arts and culture for all. **“Encouraging cultural growth and discovery,”** Jackson Ward will be reconnected to the history of the community and celebrate the culture of all Richmonders.

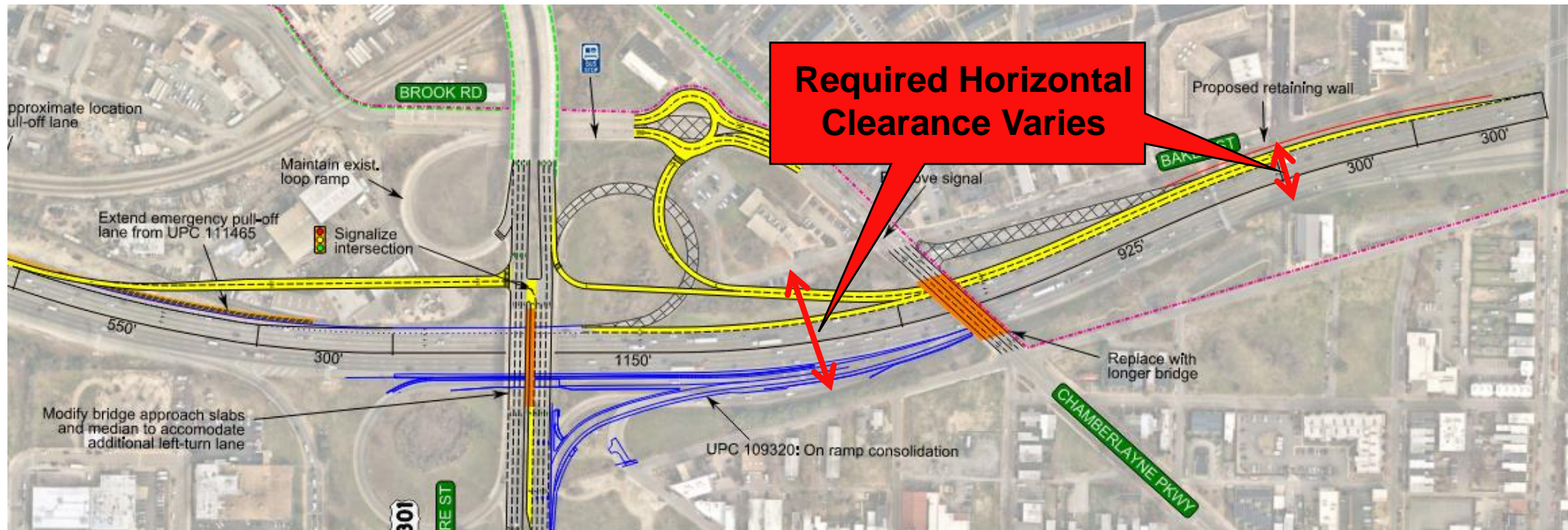
2. ENGINEERING CONSIDERATIONS

- Maintain **vertical clearance** needed to accommodate interstate traffic flow



2. ENGINEERING CONSIDERATIONS

- Maintain **horizontal clearance** needed to accommodate future improvements



Source: I-95/I-64 at Belvidere Street Interchange Study - Alternative 2B (March 2022)

2.ENGINEERING CONSIDERATIONS

- Accommodate **structural loads** for most important components identified by public for future connection

<i>Load Level</i>	<i>Components</i>	<i>Superstructure Depth (FT)</i>
Load Level 1	Sidewalks and paths , bicycle lanes, or roadway facilities (could accommodate historic markers; seating and benches)	3.25 – 4.5
Load Level 2	Parks and open space (could accommodate historic markers, murals, or memorials; seating and benches; playgrounds and recreational facilities; arts, culture and entertainment space)	5
Transition Areas	Business and commerce space (could accommodate opportunities for development)	N/A

2. AREA PLAN CONCEPT 1: LARGE CONNECTION

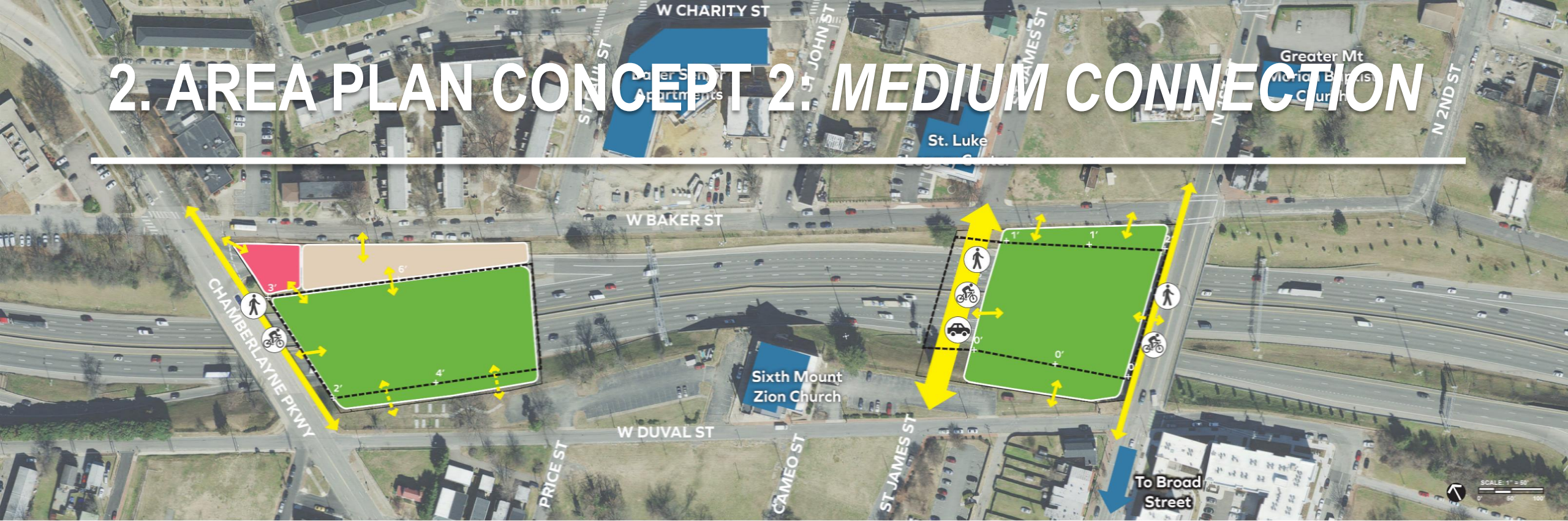


LEGEND

- Possible Park Area
- Possible Gateway Area
- Possible Buildings
- Community Landmarks
- Multimodal Connection (vehicle, bike, and/ or pedestrian, as indicated by icon)
- Pedestrian Connection (at or near grade)
- Stepped Pedestrian Connection (requires grade transition with steps and ramps)
- Significant Edge (significant grade elevation change)
- Lid/Covered Highway Area

Total Area: 6.1 acres

2. AREA PLAN CONCEPT 2: MEDIUM CONNECTION



LEGEND

- Possible Park Area
- Possible Gateway Area
- Possible Buildings
- Community Landmarks
- Multimodal Connection (vehicle, bike, and/ or pedestrian, as indicated by icon)
- Pedestrian Connection (at or near grade)
- Stepped Pedestrian Connection (requires grade transition with steps and ramps)
- Significant Edge (significant grade elevation change)
- Lid/Covered Highway Area

Total Area: 3.4 acres

2. AREA PLAN CONCEPT 3: SMALL CONNECTION



LEGEND

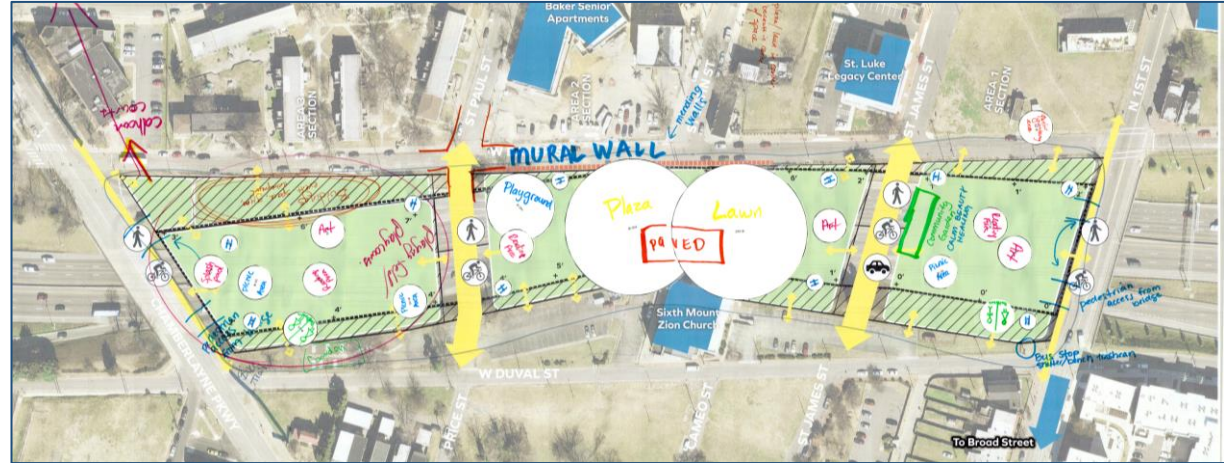
- Possible Park Area
- Possible Gateway Area
- Possible Buildings
- Community Landmarks
- Multimodal Connection (vehicle, bike, and/ or pedestrian, as indicated by icon)
- Pedestrian Connection (at or near grade)
- Stepped Pedestrian Connection (requires grade transition with steps and ramps)
- Significant Edge (significant grade elevation change)
- Lid/Covered Highway Area

Total Area: 1.7 acres

2. COMMUNITY EVENT – APRIL 28, 2022



2. FOCUS GROUPS – MAY 25 & 26, 2022



2. PRIMARY THEMES & PRIORITIES



Youth Engagement



Marketplace & Innovation Space



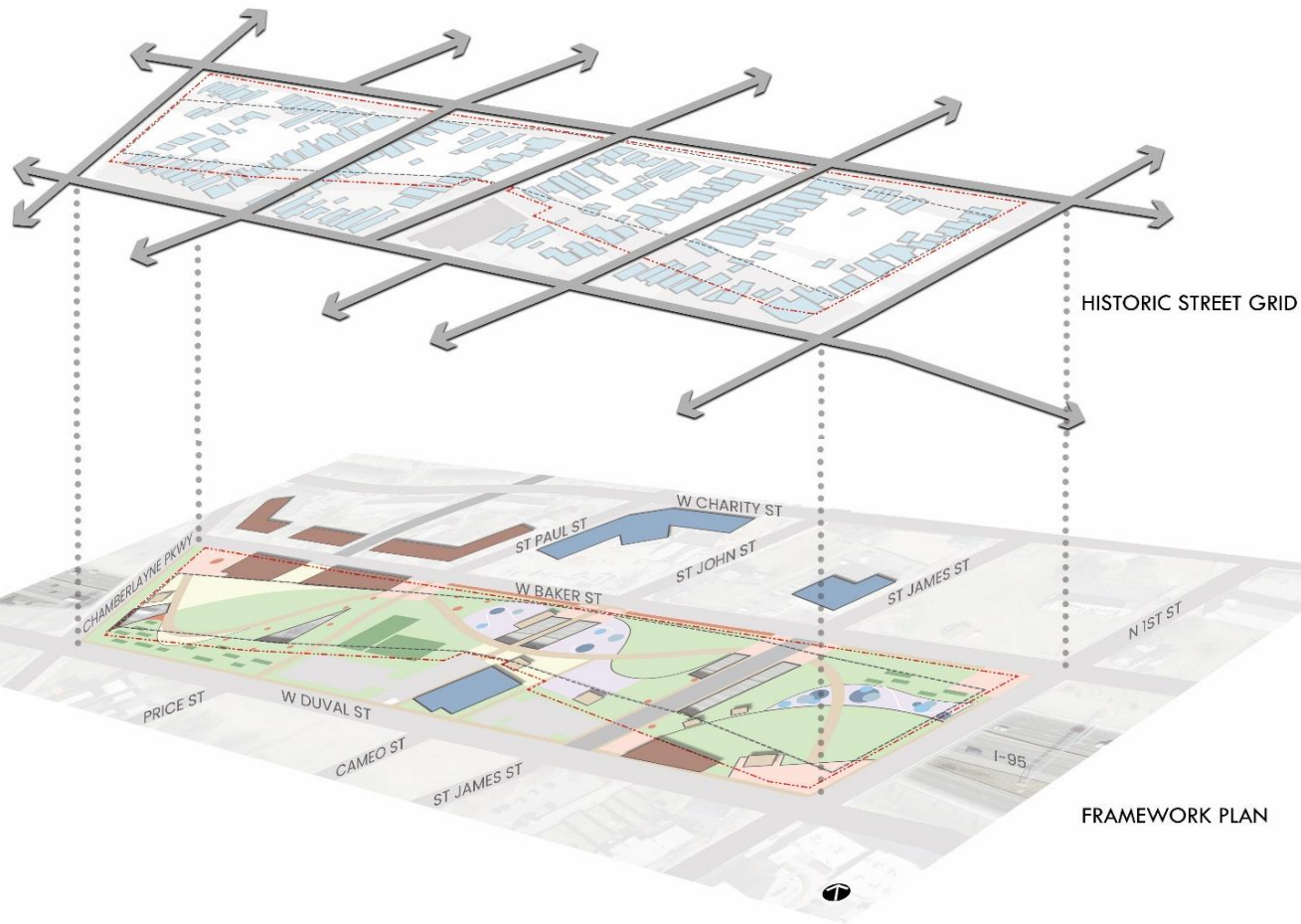
Art & Entertainment Space



Faith & Contemplative Space

3. QUESTIONS AND ANSWERS

4. FRAMEWORK PLAN - OVERVIEW



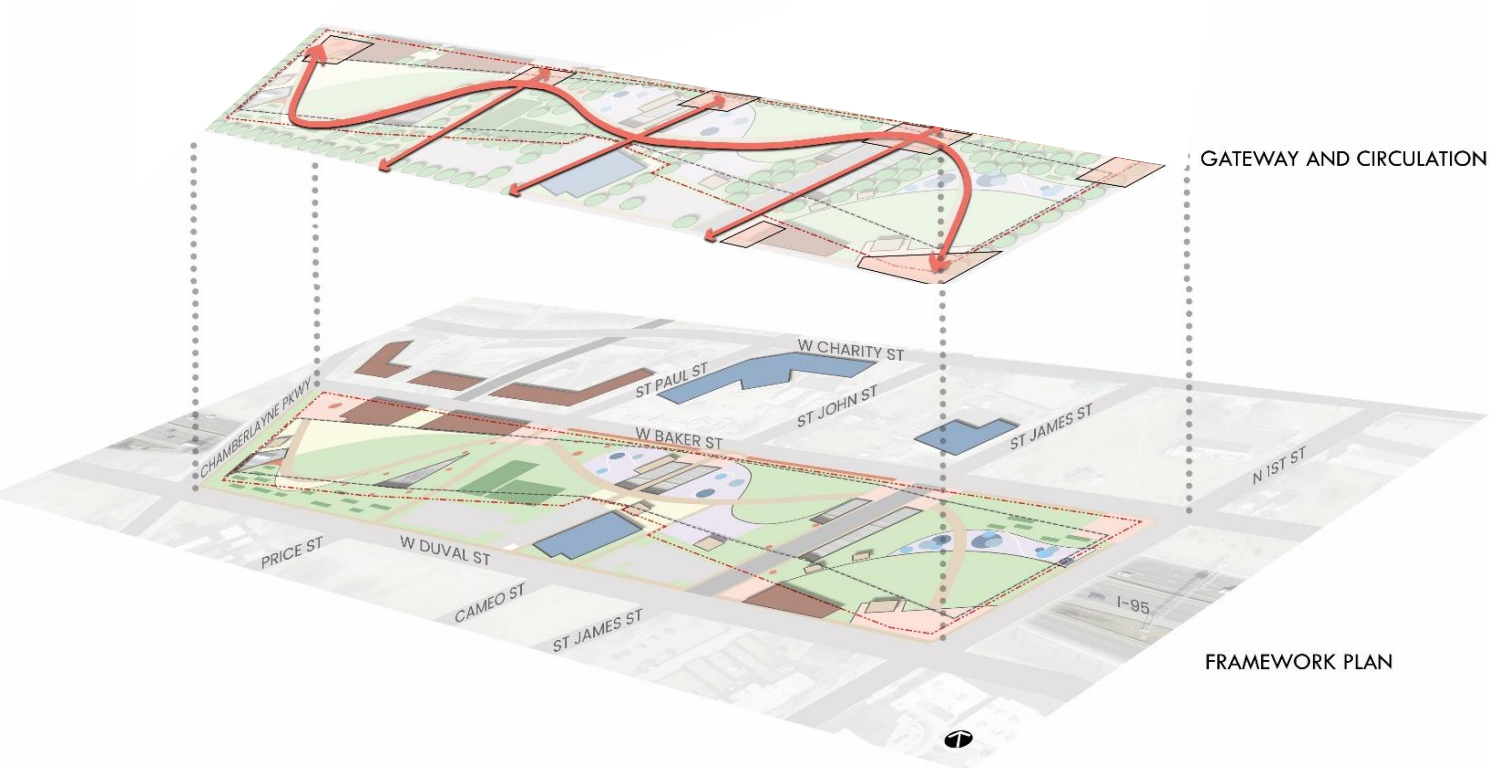
WHAT WE HEARD:

- Reconnect the historic street grid
- Use historical mapping to create markers and interactive experiences

THE FRAMEWORK PLAN

- Reconnect the historic street grid, where feasible
- Provide historical markers and interactive experiences

4. FRAMEWORK PLAN - OVERVIEW



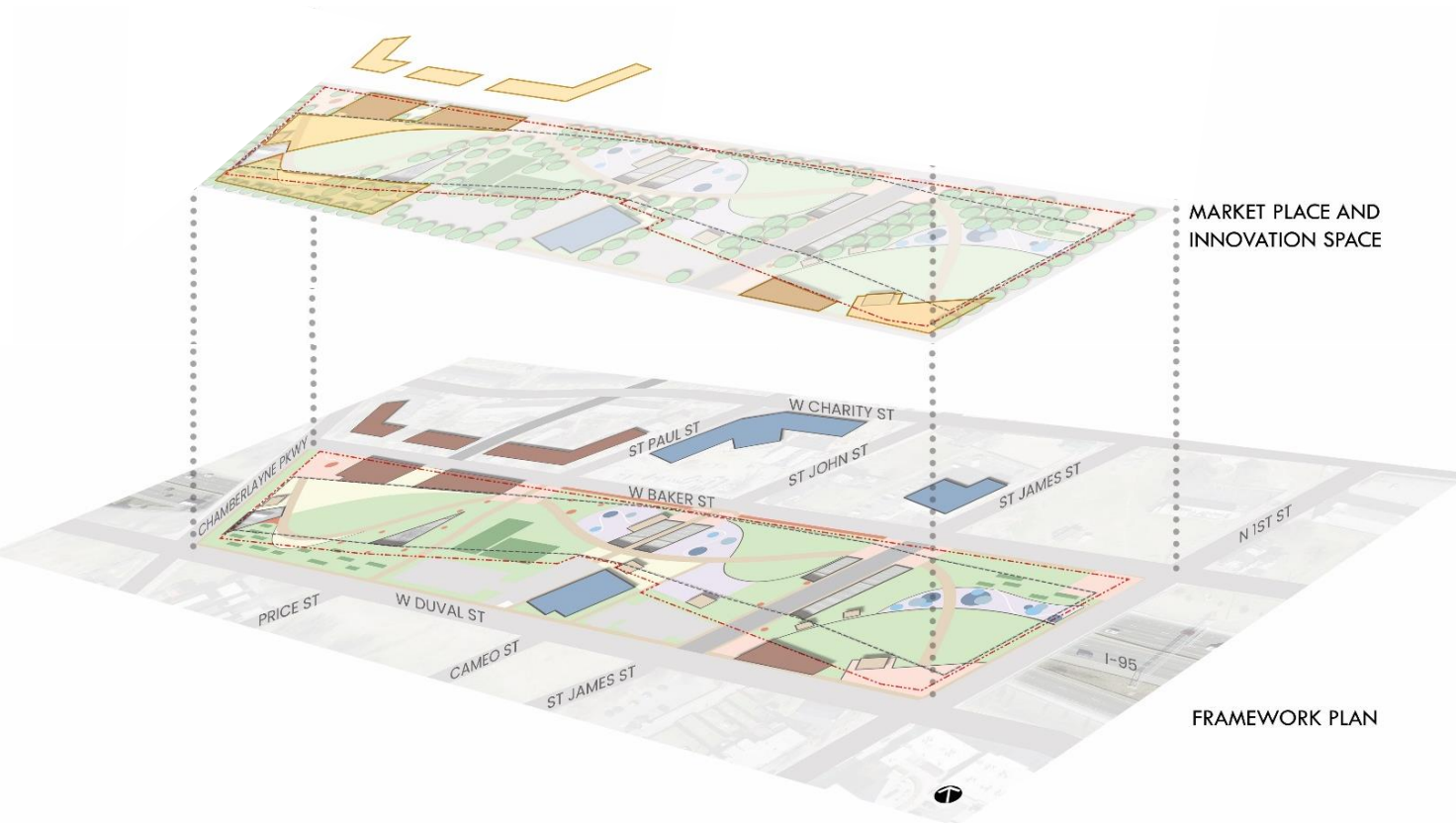
WHAT WE HEARD:

- Improve circulation in and around Jackson Ward and the surrounding neighborhoods
- Reconnect community with paths that encourage cultural growth and discovery

THE FRAMEWORK PLAN

- Provide circulation through the project and to adjacent neighborhood
- Incorporate paths that encourage cultural exploration and growth through the project

4. FRAMEWORK PLAN - OVERVIEW



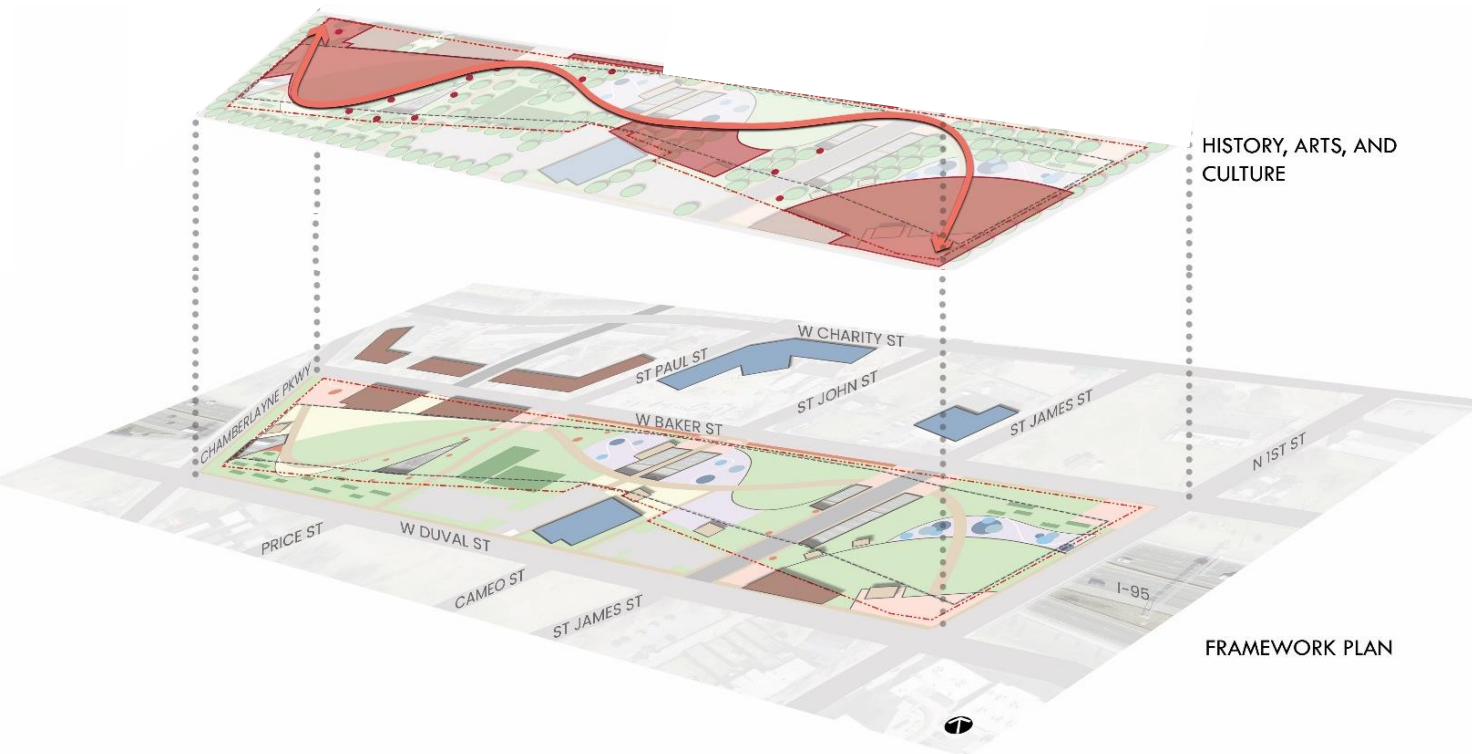
WHAT WE HEARD:

- Reestablish historic neighborhood
- Reestablish opportunities for marketplaces, commerce, and neighborhood innovation

THE FRAMEWORK PLAN

- Incorporate opportunities for buildings and storefronts in transition areas, where feasible
- Incorporate marketplace, commerce, and event spaces throughout the project

4. FRAMEWORK PLAN - OVERVIEW



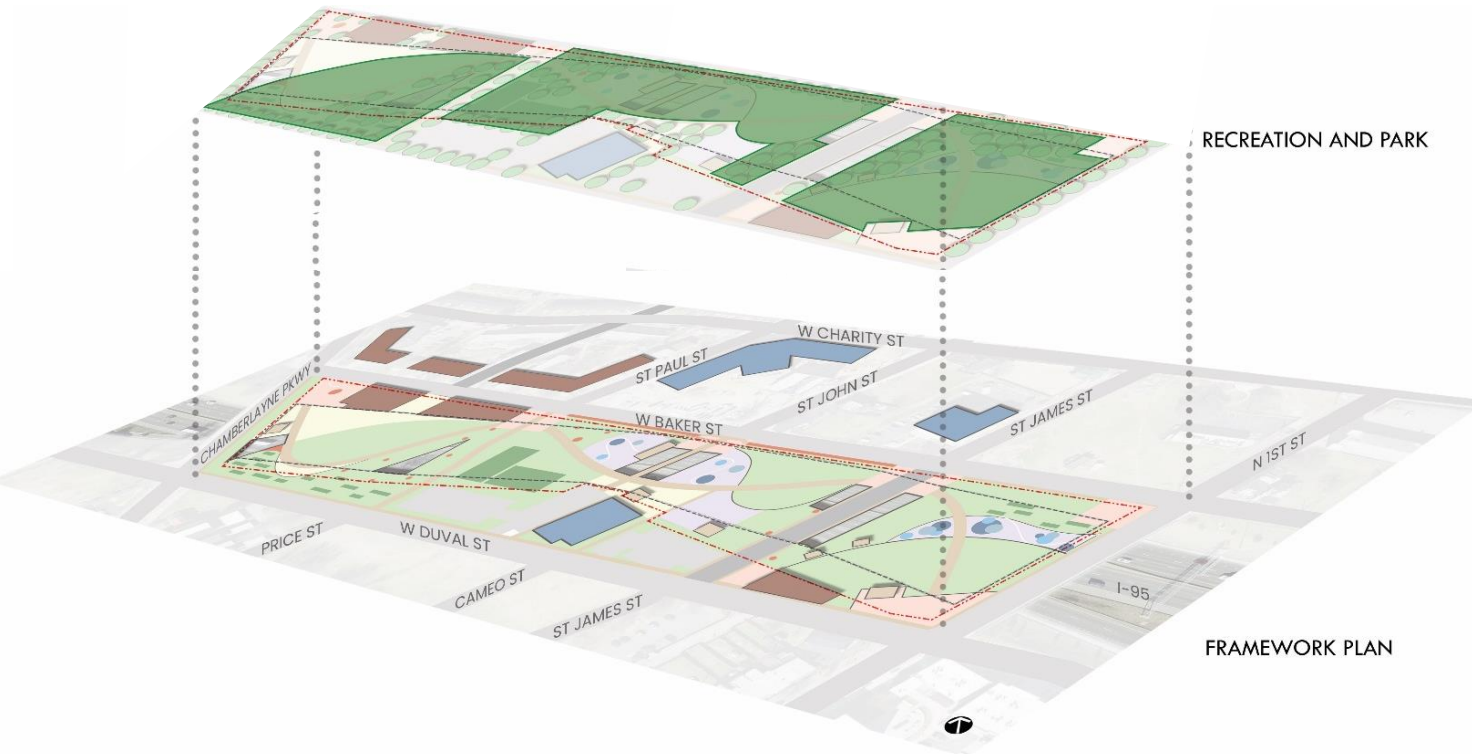
WHAT WE HEARD:

- Build and nurture excellence in Jackson Ward with tribute to past and present history, arts, and culture

THE FRAMEWORK PLAN

- Provide historical markers and interactive experiences
- Integrate arts and entertainment spaces that celebrate the history and culture of Jackson Ward

4. FRAMEWORK PLAN - OVERVIEW



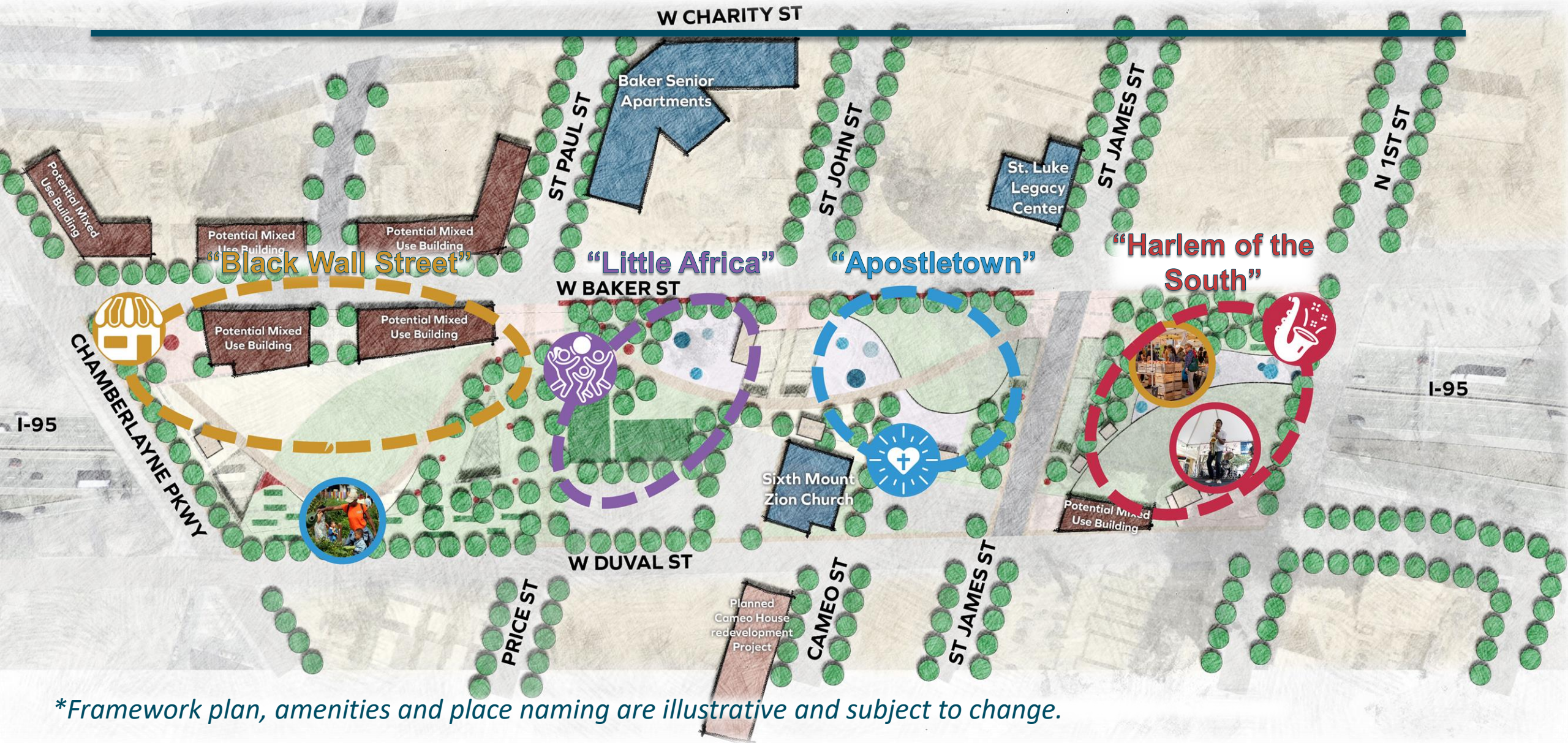
WHAT WE HEARD:

- Reconnect Jackson Ward with community amenities and programmable spaces
- Build and promote excellence in Jackson Ward for youth engagement and personal development

THE FRAMEWORK PLAN

- Provide recreation and community spaces for the residents of Jackson Ward
- Promote opportunities for youth and personal development

4. FRAMEWORK PLAN



**Framework plan, amenities and place naming are illustrative and subject to change.*

4. FRAMEWORK PLAN

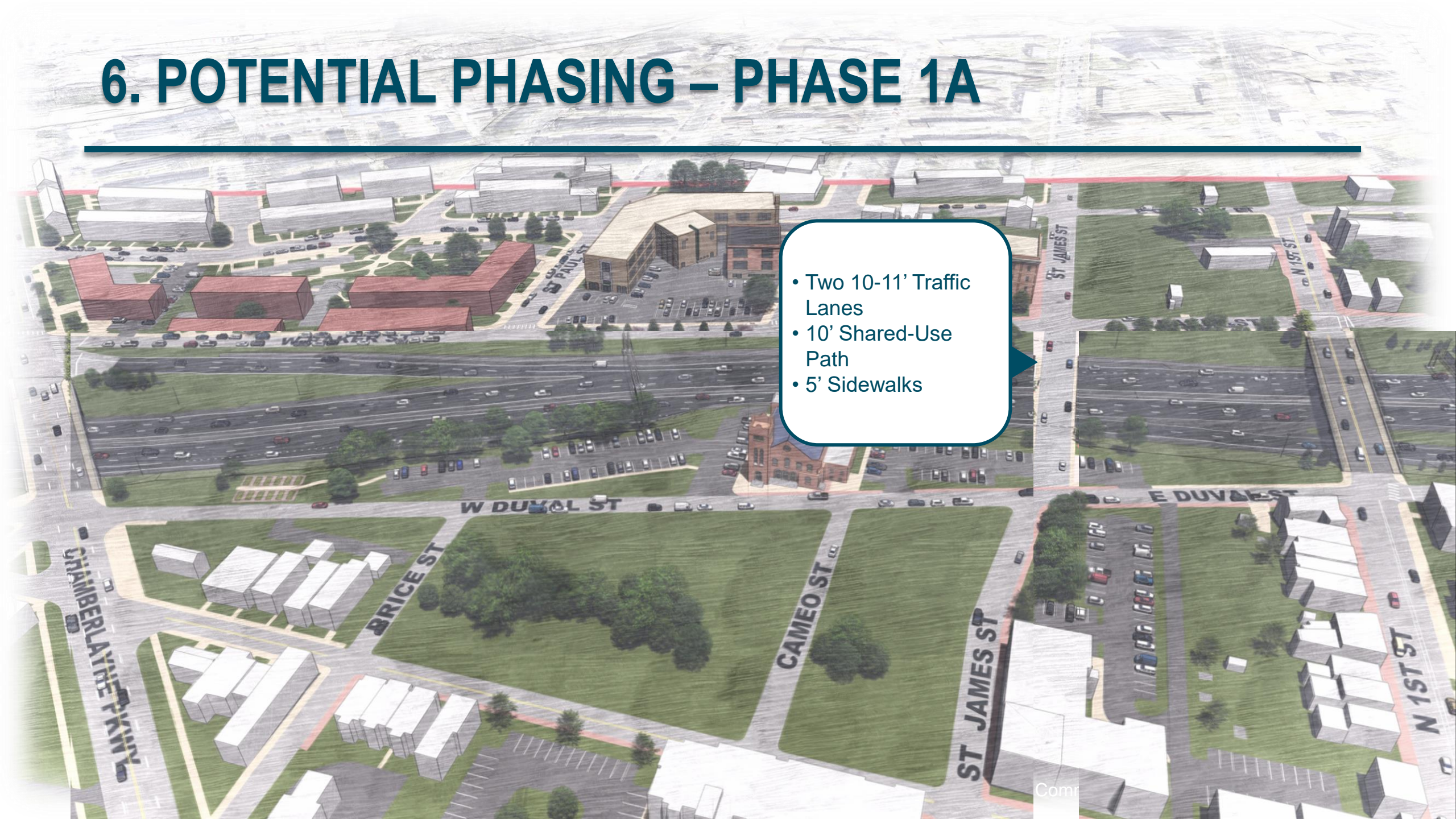


**Framework plan is illustrative and subject to change.*

5. QUESTIONS AND ANSWERS

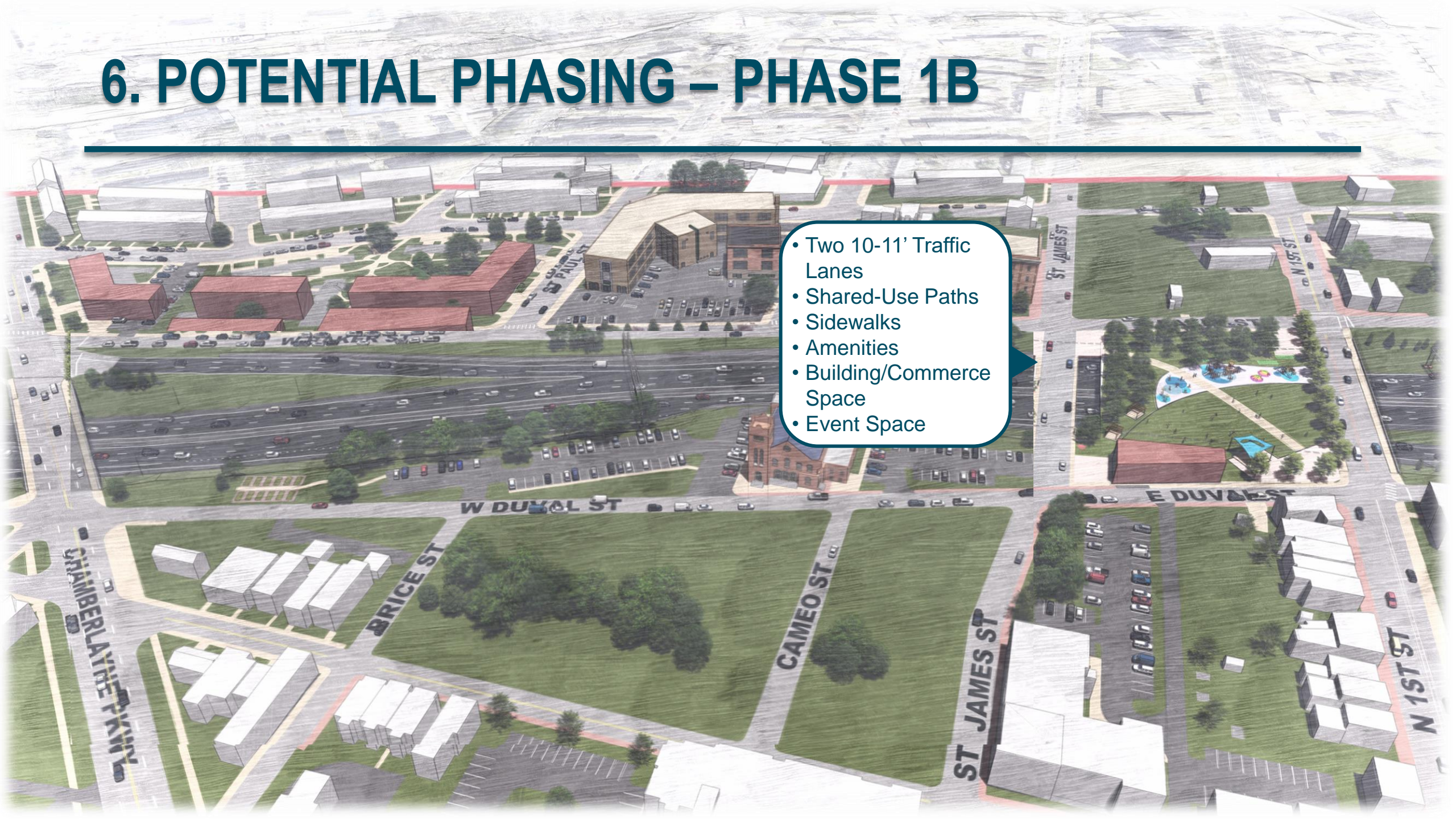
6. POTENTIAL PHASING – PHASE 1A

- Two 10-11' Traffic Lanes
- 10' Shared-Use Path
- 5' Sidewalks



6. POTENTIAL PHASING – PHASE 1B

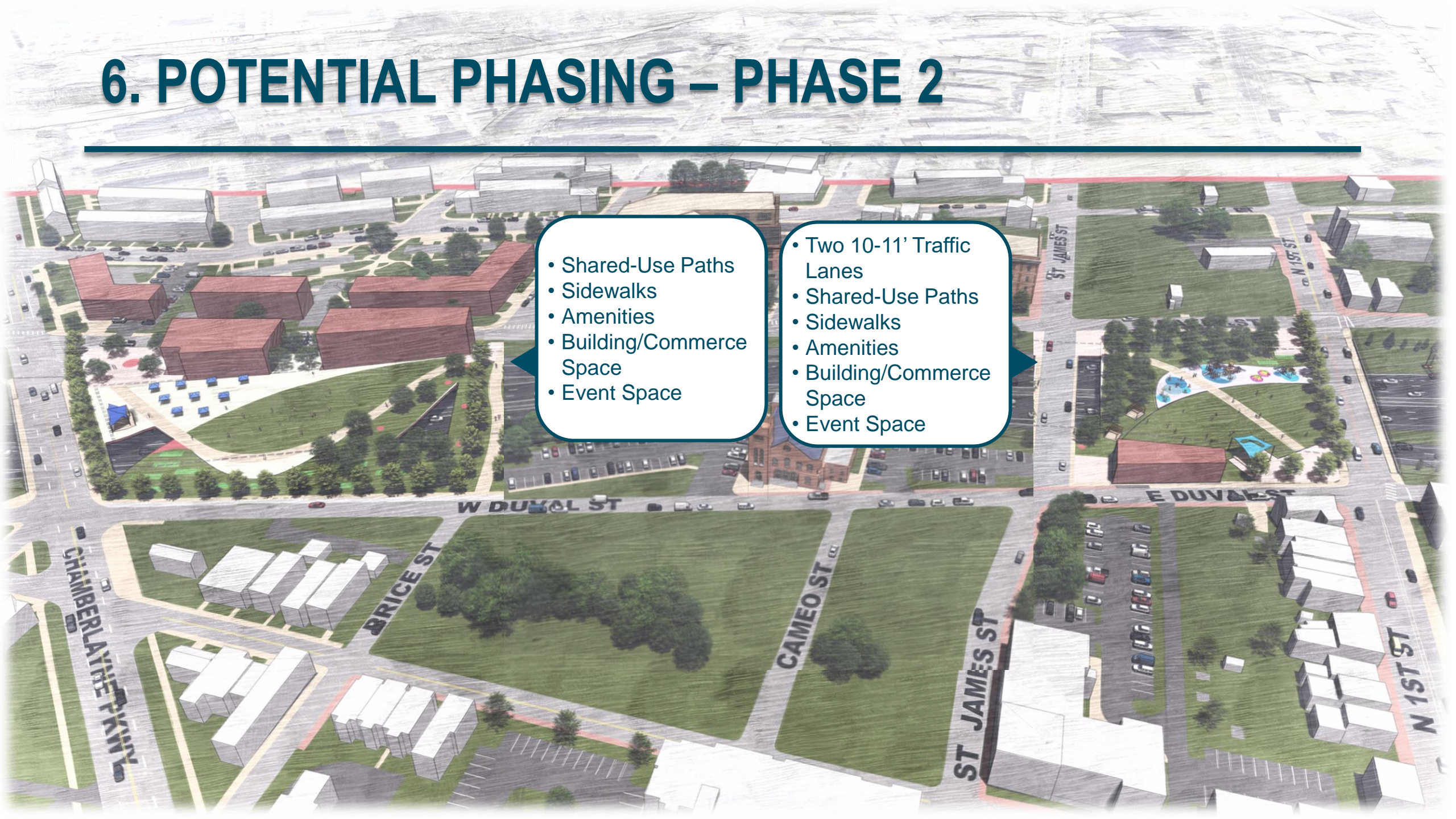
- Two 10-11' Traffic Lanes
- Shared-Use Paths
- Sidewalks
- Amenities
- Building/Commerce Space
- Event Space



6. POTENTIAL PHASING – PHASE 2

- Shared-Use Paths
- Sidewalks
- Amenities
- Building/Commerce Space
- Event Space

- Two 10-11' Traffic Lanes
- Shared-Use Paths
- Sidewalks
- Amenities
- Building/Commerce Space
- Event Space



6. POTENTIAL PHASING – PHASE 3

- 
- Two 10-11' Traffic Lanes
 - Shared-Use Paths
 - Sidewalks
 - Amenities
 - Building/Commerce Space
 - Event Space

6. KEY CONSIDERATIONS – ANTI-GENTRIFICATION

Jackson Ward Community Plan

- Looking at entire neighborhood (18 months)
- Policy and Program Recommendations
 - Housing Analysis and Plan
 - Small Business Preservation and Support Strategy
 - History, Arts & Culture Synchronization

6. KEY CONSIDERATIONS – NEXT STEPS

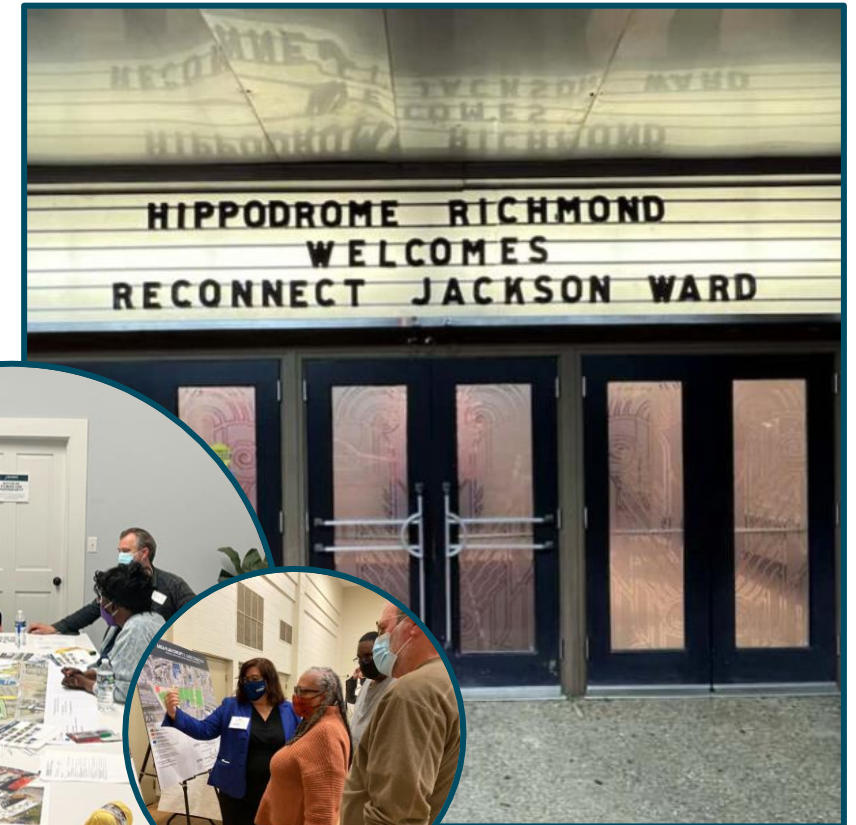
1. Why Richmond? – From Confederacy to Equity
2. Engaging a Black Design Professional
3. Plan for Deeper Dive Design Process
4. Potential Organizational Infrastructure and Funding

6. OVERVIEW OF NEXT STEPS

- Identify policy and program recommendations for preserving and uplifting Jackson Ward and surrounding neighborhoods
- Feasibility study completion
- Grant applications and identification of funding opportunities
- Additional studies and analyses
- Preliminary engineering and final designs
- Construction and implementation

6. COMMUNITY EVENT #3 – JUNE 29, 2022 6 – 8 PM

- June 29, 2022 | 6:00 –8:00 PM
- Hippodrome Theater
 - 6:15 PM Presentation
 - 7:15 – 8 PM Open House
- Share recommended framework
- Learn about next steps
- Review and discuss policy and program recommendations



7. QUESTIONS AND ANSWERS

8. ADJOURN